



KOMERA

Self-Confidence, One Girl at a Time.

2018 Annual Report

KOMERA



In Rwanda, "Komera" means "be strong, have courage."

We believe that young women have the right to **lead change** in their community, to experience the joy of **self-discovery**, and to realize their **potential**.

our model



EDUCATION

Komera sponsors the most vulnerable female students with full tuition, including room and board, beginning in high school through university in Rwanda. We provide intensive leadership courses, one-on-one care, and a 9 month post-secondary transition program. We do what it takes to help her succeed.



COMMUNITY

Our investment goes beyond each individual girl; it includes her family as well. We hope to ignite sustainable growth and economic stability for each scholar and her family. Komera builds a local community of support for our scholars. At school, a scholar meets with her mentor and fellow scholars once a week. At home, her parents work with the Komera Parent Cooperative to lift themselves out of poverty and become community advocates.



SPORT

Sport is deeply ingrained in our work, not only to promote excellence but to promote female participation and play.

Sport provides a unique opportunity to teach life skills such as teamwork, leadership, as well as physical and emotional health. We use sport as a tool in our Yoga for Adolescent Mothers Advancement program, Primary 5 Sports Activation and Nabaccu Parent Program, with quarterly community runs, and annual Komera Global Run.



year in review

impact by the numbers



100% graduation rate from secondary school



8 partner secondary schools



149 young women in educational programming



3 university graduates



55 young women in university in Rwanda



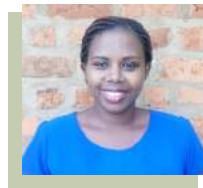
50 Komera Parent Cooperative Businesses

2018 additions

Pathway to Power Programs

- Yoga for Teen Mothers
- Nabaccu Community Sport
- Soccer for Youth Engagement

Staff Members



Josephine

Teen Mother Advancement Coordinator



Veneranda

Community Development & Training Manager

EDUCATION

We know that in order to support young women, we have to start early.

PRIMARY SCHOOL

This year, our Social Worker Manager Ruth and our Program Administrator Vestine spent time in local primary schools working with **750 primary school students** on their rights and proper hygiene and healthcare. We incorporate sport, play, songs and skits to inspire students to engage and learn!



SECONDARY SCHOOL

This year we selected **20 new young women** to join our program with scholarships to Secondary School. One of the new students is named Pacific and she started in Senior 4 at FAWE Girls School. She will remain with us for the next 4 years, and if she attends University, another 4! Pacific and all 70 Komera scholars receive everything they could possibly need to thrive during their years at boarding school and beyond!



Pacific, Secondary School Scholar

LEADERSHIP SUMMITS

Komera hosted three Leadership Summits for Secondary School scholars during their school break periods this year in April, August, and December. The leadership curriculum differs at each summit, based on the scholars' needs and the objectives of the team at the time.

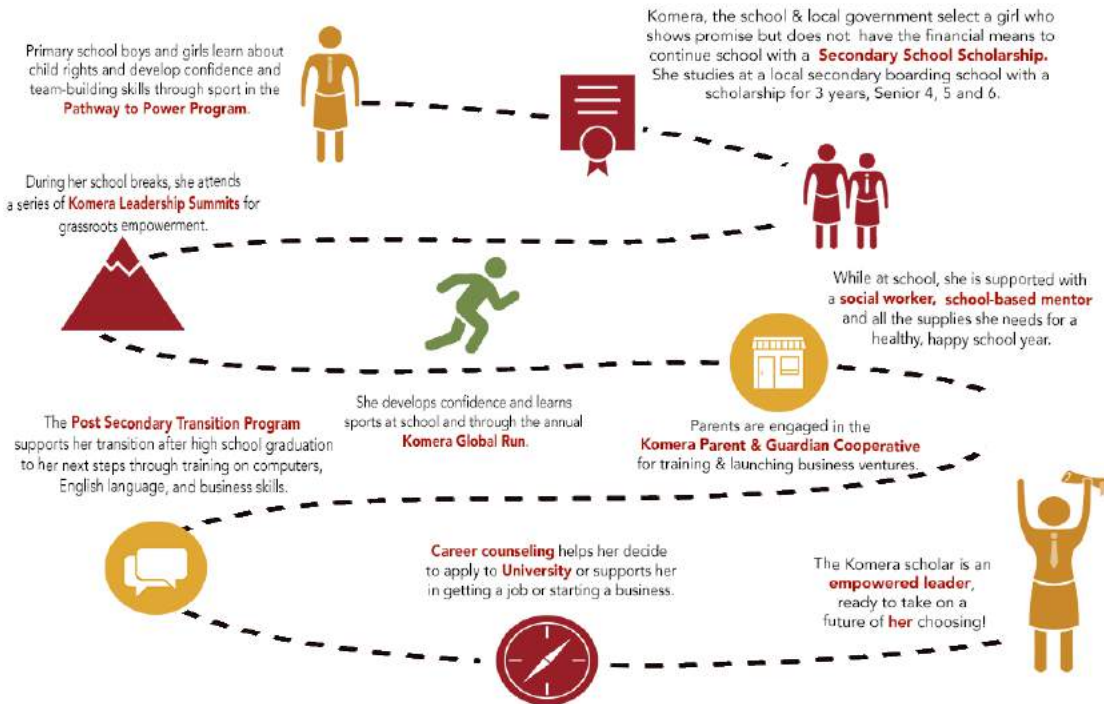
The focus of the lessons includes:

- reproductive health
- behavior change
- prevention of early pregnancies
- training to become social agents of change
- leadership skills
- goal setting
- story telling
- career talent development
- hygiene

MENTORSHIP

We hire and train teacher mentors at each of our eight partner schools - **they are advocates for the Komera scholars and help them thrive** while they are at boarding school. Every week, mentors meet with Komera scholars to discuss issues they are facing and learn about themselves and how they can give back in their community. This year at FAWE Girls School, the Komera scholars saved money together to support one of their fellow vulnerable students with school materials!

JOURNEY OF A SCHOLAR



POST SECONDARY TRANSITION PROGRAM

This year, we had **25 young women participating in our PSTP**. In Rwanda there is a nine-month gap between graduation from secondary school and starting university, and the PSTP fills that time with valuable training that will help no matter what their next step may be. The program introduces students to computers through ICT training, supports their language skills through an intensive English program, and teaches entrepreneurship through small business development. We also partner with Workforce Development Association (WDA), in Rwanda to supplement our training by providing specific courses in hospitality and tourism - skills that they can use immediately upon graduation!

UNIVERSITY

Our scholars are not only graduating and thriving in secondary school - **they are being accepted into university!** Young women need to know that if they invest in their education, the sky is the limit. We currently have 55 young women in university on scholarships, and that number continues to grow!



COMMUNITY DEVELOPMENT

Our investment goes beyond each individual girl; it includes her family as well.



The Komera Parent and Guardian Cooperative

is completely led by Komera guardians and parents. Growth over the past ten years has been incremental and is proof that we need to engage communities including men and boys in the development narrative for girls.

At Komera, we know that education will not provide everything a young woman needs. When she is selected into the Komera program, so is her family. In order to engage in supporting a young woman, we must also include her family and the community.



We hope to change the narrative for everyone.

Parents are advocates for girls in our community, and are leading the way in addressing sensitive cultural norms that limit opportunities for girls. **The cooperative has grown to over 100 parents and 50 business ventures** boasting some impressive results for the community.



"I learned new business skills from Komera trainings! I never thought I could farm tomatoes before due to culture beliefs that such business is done by men, not women."

-Primitive, Komera parent, working in her tomato farm

Primitive, mother to Komera scholar Martha, is in the Komera Parent Cooperative group in the Nyankora cell. When her husband got sick with Tuberculosis, it was too much for Primitive to tend the family farm on her own. Now she works in a cooperative group with a tomato business through Komera, and she is able to support her family and harvest twice per week. With this income, she can support her other 3 children to go to school! In 2019, she hopes to expand her business and to implement an irrigation system, which will better protect her product and her family from the effects of climate change! Her innovative, forward-thinking plan is an inspiration to her cohort members and to the whole community.



91%

have seen improvement in their families

- constructing new homes or rehabilitating old homes
- adding sanitary facilities like toilets & washing stations to homes
- building a safe, clean kitchen cooking space
- installing solar on their homes for electricity



91%

of parents have seen an increase in health and well-being of their entire family based on:

- ability to purchase health insurance & receive medical care
- eating a more balanced diet & benefiting from a consistent food supply



85%

of parents have been able to send additional children to school or support additional children with required school materials and supplies



97%

are more involved in the lives of their children in school and at home



SPORT

Participation in sports builds self-confidence!

We believe sport provides a unique opportunity to teach important life skills such as **teamwork, leadership**, as well as **physical and emotional health**.



KOMERA GLOBAL RUN

In 2008, we organized the first ever girls-only fun run in Rwanda, and hundreds of girls joined together to run in solidarity! Ever since that June day a decade ago, Komera was inspired by the enthusiasm of our community and the collective power of young women coming together to not only run, but use their voices to create change. Every June, Komera hosts the run for our community in Rwinkwavu to celebrate and support young women!

We believe in the power of sport as a tool to create change!



SOCCER FOR YOUTH ENGAGEMENT

At Komera, we believe that in order to address the issue of female equality, we must work with boys too. In our School Partnership Program we work with boys and girls in Primary 5 (grade 5) using soccer and sport as a tool for engagement. Over **700 students from four local primary schools meet on a bi-weekly basis** to play together and to learn about their health, child rights and how boys and girls should treat one another.



“Teach her she can run the world!”



NABACCU PROGRAM- Engaging in Community Dialogue

In order to **address social norms** concerning women and girls, Komera staff work with the broader community. We do this through community sporting events where people gather to have fun, develop community and learn. Parent groups present theatre pieces around issues that are concerning them and create a community dialogue.

YOGA FOR TEEN MOTHERS

Komera developed a program to reach the most vulnerable demographic in our community: pregnant youth and teen mothers. Using a multifaceted approach, **Komera works to support their health, education and economic development**, all while using yoga as a tool for mind and body wellbeing. This innovative program engages community-based mentors who work with teen mothers. Mentors meet with their mentees twice a week, helping them to set goals, take care of their infants, and plan for their future. Once a week young mothers participate in yoga to help them address anxiety and trauma.



VISIONARIES

U.S. Board of Directors

David Boehmer Partner, Heidrick and Struggles and Board Chair
 Elizabeth Bohart Executive Director and Co-Founder of Watchers of the Sky Initiative
 Margaret Butler Co-founder, Executive Director
 Kristen Gengaro SVP Group Account Director, CAHG/TBWA Worldhealth
 John Hagarty COO, Morgan Stanley Investment Management
 Ali Samadi Managing Director, Equity Derivatives at Nomura Securities
 Larkin Callaghan Director of Strategy, Communications & Partnerships;
 AIDS Research Institute, USC San Francisco
 Victoria Reese Managing Partner, Heidrick and Struggles
 Jessica Malaty Rivera, Health & Science Communications Executive

Rwanda Board of Directors

Donatha Gihana Senior Independent Gender Consultant
 Juliette Muzaire Human Resource Specialist, Chemonics International
 Honoline Niyigena Executive Assistant, Qatar Airways
 Alice Nyirimana Social Worker Manager, Partners In Health
 Evelyn Mukakabano Social Worker, Rwinkwavu Hospital
 Edward Shyaka District Director, Partners in Health
 Jackline Mukayisiri Former Komera Scholar, Graduate, University of Rwanda
 Solange Ayanone Managing Director, Afri-Media
 Francis Kamanzi Lecturer, College of Education, University of Rwanda
 Jackline Mukashyaka Student, University of Rwanda
 Dativah Bideri Mukamosonera Rwanda Country Director

Advisory Board

New York

Jessica Brennan Managing Director, Carlyle Group
 Amy Synnott D'Annibale, Executive Editor, Harper's Bazar
 Kristina Apgar Creative Partnership Director, National Domestic Workers Alliance
 Bernadett Vajda Image Consultant
 Elizabeth Langel Associate Principal, Heidrick & Struggles
 Arlette Umahoza Precious Metals Analyst, Blenheim Capital Management
 Julie Henderson Co-founder, ALDA Models
 Danielle Redman Co-founder, ALDA Models
 Consolee Nishimwe Activist, Public Speaker and Author
 Annelise Osborne former Senior Vice President, Moody's Investor Service

Boston

Lisa Eisenbud Founder, GoGirlGlobal
 Siiri Morley Director of Partnerships, Upstream USA
 Victoria Gomez Store Manager, lululemon Chestnut Hill
 Allyson McDonald Former Global President, Ellevest Network
 Leonela Gonzalez Educational Consulting, ESL Instructor, Tufts University

San Francisco

V.A. Lopes Senior Vice President, Management Supervisor, Giant Creative Strategy
 Sasha Rabsey Manager, HOW Fund and Co Founder of Present Purpose Network

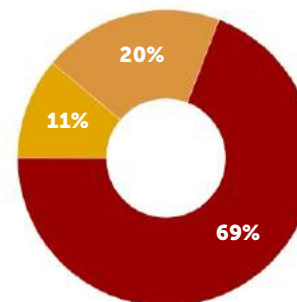
Komera Staff

Margaret Butler Executive Director
 Dativah Bideri Mukamosonera Rwanda Country Director
 Rosemary Musiimire Deputy Country Director
 Ruth Kamatali Social Worker Manager
 Vestine Uwamahoro Sports Activation Officer

Veneranda Barungi Community Development & Training Manager
 Josephine Mutamba Teen Mother Advancement Program Coordinator
 Scovia Kamatenesi Administrative Assistant
 Sylvia Murekatete HR & Finance Manager
 Lauren Mason Development & Communications Manager

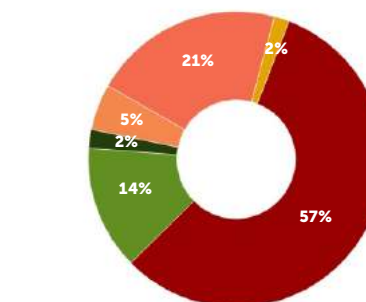
FINANCIALS

FY18 Expenses



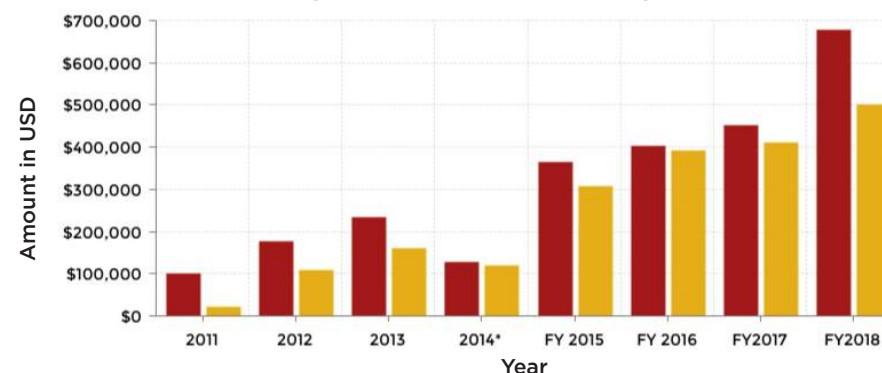
- Programs
- General and Administrative
- Fundraising

FY18 Revenue



- Grants and Contracts
- Fundraising Events
- Appeals Income
- Scholarship Contributions
- In-kind Contributions
- Corporate Contributions

Program and Fundraising Growth



- Total Revenue Raised
- Program and Supporting Expenses

*In 2014 we changed from calendar year to fiscal year. Year 2014 represents financials for a partial year, from January-June 2014.

PARTNERS





KOMERA

PO Box 1491
Jamaica Plain, MA 02130
komera.org
info@komera.org

Komera is a non-profit 501(c)(3) organization.
All donations are tax deductible.